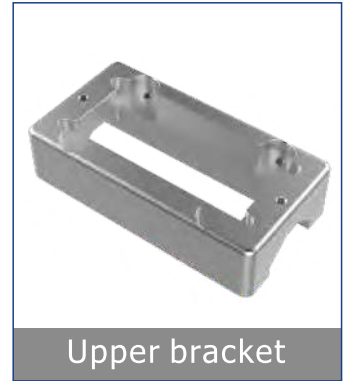


## COMPONENT PARTS



ETM™



Upper bracket



Base bracket



Connecting cables

## APPLICATION



Clamp On Type Flow Meter

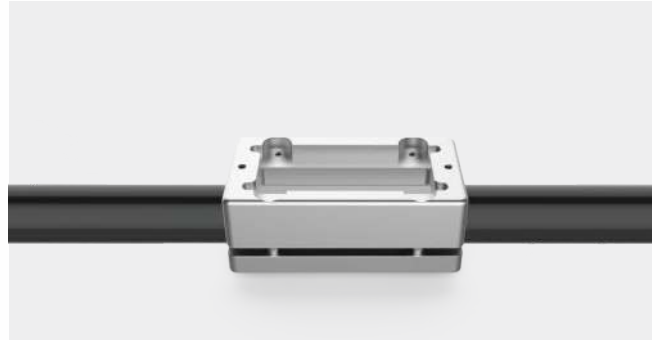
# INSTALLATION STEPS

## 01 Clean the tube



Make sure no dirt, paint, or other stains on the surface of the tube.

## 02 Install the bracket



Align flow meter to the pipe position, Install screw on top part of the bracket, the bottom part of the bracket will automatically connect with the top part. Tighten the four M4 screws.

## 03 Install ETM™



Take the cover off the sensor, put the flow meter into Upper bracket, and tighten two M4 screws.

## 04 Connect the cable



Take out the cable, connect it to the socket, and tighten up.

## 05 Run the ETM™



Please refer to the manual for cable connection; Power on and see if the  $SQ \geq 50$  which indicates that the measurement has been stable.

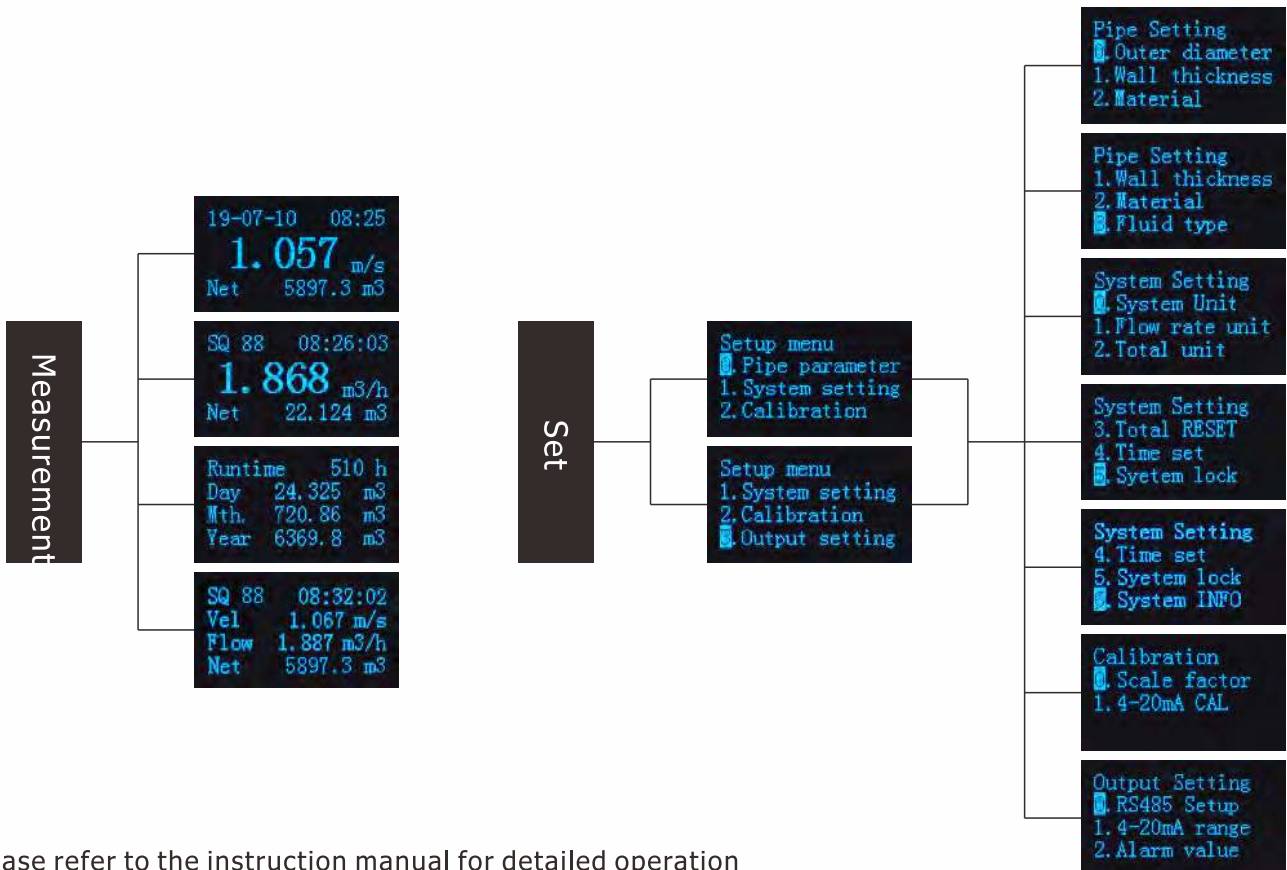
# ETM™ SETTING

## Special instructions:

ETM™, which is designed for different pipe diameter and materials, will be set in standard setting before it leaves the factory. There is no need to reset.




# DISPLAY MENU



Please refer to the instruction manual for detailed operation

# PERFORMANCE INDEX

Product	ETM™ flow meter 
Model	X3
Flow range	0.1 m/s ~ 5.0 m/s
Accuracy	±2.0%
Repeatability	0.8%
Pipe size	Φ6.35 ~ Φ90
Data storage	Daily, monthly, and Annual. Flow Totalizer
Analog output	4~20mA, Maximum load: 600Ω
Alarm output	OCT, Upper and lower limit alarm function (optional)
Communication	RS485, support Modbus communication protocol
Power supply	24 VDC
Cable length	2.0m
Keypad	Four light touch buttons
Screen	OLED 128*64 display screen
Units	Metric and imperial units are available, Cubic Meters(m3), Liters(L), USA Gallons(GAL)/hour, /min, Default unit setting: m3/h
Totalizer	Six bit digit
Piper material	Stainless steel pipe, carbon steel pipe, copper pipe, plastic pipe
Case material	Aluminum alloy
Environment temp.	0°C~50°C (32°F~122°F)
Medium temp.	0°C~50°C (32°F~122°F)
Environment humidity	0-95% relative humidity, without condensation
IP Grade	IP54

Moeld	X3-Φ6.35	X3-Φ9.53	X3-Φ12.7	X3-Φ15	X3-Φ20	X3-Φ25
Weight (KG)	0.91	0.91	0.90	0.90	0.84	0.84
Moeld	X3-Φ32	X3-Φ40	X3-Φ50	X3-Φ63	X3-Φ75	X3-Φ90
Weight (KG)	0.82	0.88	0.98	1.43	1.52	1.95

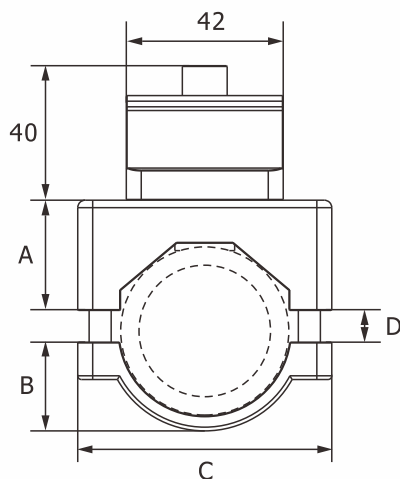
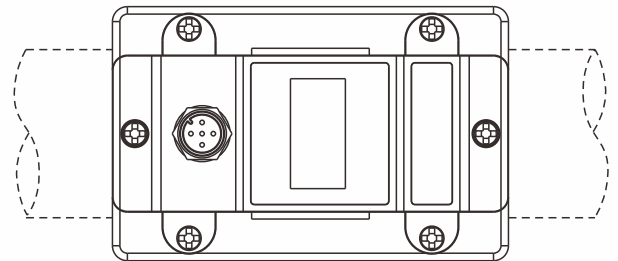
Clamp On Type Flow Meter

# PIPING SPECIFICATION

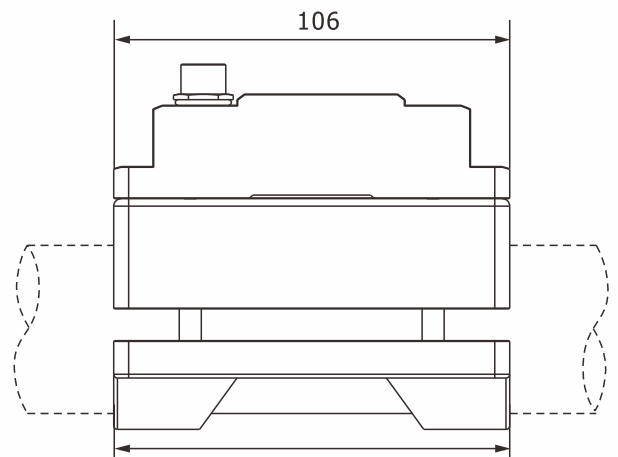
Model	X3-Φ6.35	X3-Φ9.53	X3-Φ12.7	X3-Φ15	X3-Φ20	X3-Φ25
OD	Φ6.35	Φ9.53	Φ12.7	Φ15	Φ20	Φ25
ID	4mm	8mm	--	10mm	15mm	20mm
DN	--	DN8	--	DN10	DN15	DN20
NB	--	2分	--	3分	4分	6分
Model	X3-Φ32	X3-Φ40	X3-Φ50	X3-Φ63	X3-Φ75	X3-Φ90
OD	Φ32	Φ40	Φ50	Φ63	Φ75	Φ90
ID	25mm	32mm	40mm	50mm	65mm	80mm
DN	DN25	DN32	DN40	DN50	DN65	DN80
NB	1寸	1.2寸	1.5寸	2寸	2.5寸	3寸

# DIMENSIONS

型号	A (mm)	B (mm)	C (mm)	D(mm)	
				min	max
X3-Φ6.35	--	--	--	--	--
X3-Φ9.53	25	10	58	1.5/Φ9.53	6/Φ14.03
X3-Φ12.7	25	10	58	1/Φ12.7	6/Φ17.7
X3-Φ15	25	10	58	1/Φ12.7	6/Φ17.7
X3-Φ20	25	10	58	1/Φ16.5	7.5/Φ23
X3-Φ25	25	15	58	1/Φ25	4/Φ28
X3-Φ32	28.5	18.5	58	1/Φ32	4/Φ35
X3-Φ40	29.5	24	68	1/Φ38	9/Φ45
X3-Φ50	36	27	78	1/Φ48	7/Φ54
X3-Φ63	41	32	91	1.5/Φ58	8.5/Φ64
X3-Φ75	46.5	40	105	1/Φ72	7/Φ78
X3-Φ90	51.5	43	119	1/Φ80	13/Φ92



Clamp On Type Flow Meter



106